

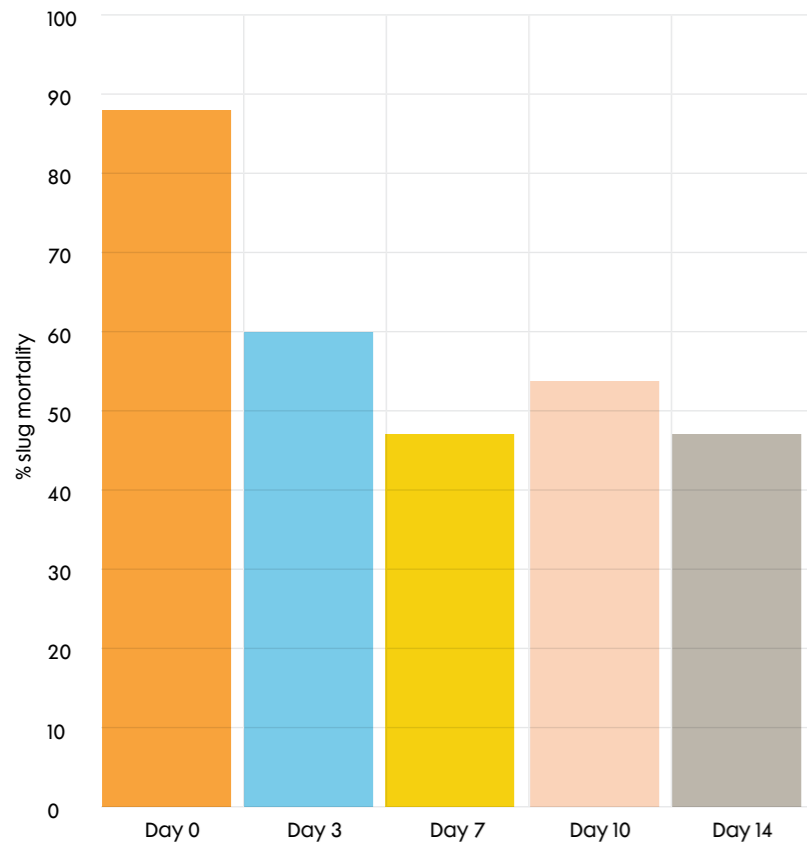
Durability unearthed

Excellent weatherability and mould resistance

SlugOut's been built tough to withstand the rain. Trials have shown that it does not disintegrate in heavy rain and remains intact. SlugOut contains a mould inhibitor.

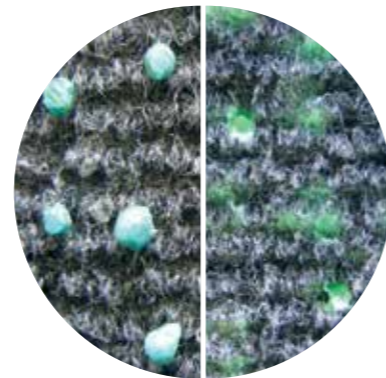


SlugOut – Excellent weatherability

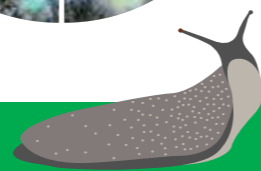
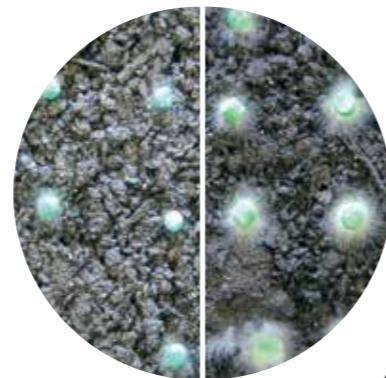


Number of days SlugOut baits exposed outdoors on soil surface before grey field slugs added. (Nufarm trial, 2018).

SlugOut 128mm rain Competitor 128mm rain



SlugOut After 10 days Competitor After 10 days



Directions for use

Broadcast: (preferred option) Use 10-15kg/ha. Use high rate where slug/snail numbers are high. Broadcast evenly over the surface of the ground or band along the plant/drill rows. Apply by hand or through granule or fertiliser applicators.

For small areas use about 6g (1 teaspoon) per sq m.

For crop establishment apply baits prior to sowing (1-5 days), at sowing or immediately after sowing. Split applications often give the best results. Apply half the baits (5-7.5kg/ha) 1-2 weeks prior to sowing and the other half at sowing. For emerged or established crops apply immediately damage appears.

Drilling with seed: Drill 10kg/ha into furrow with seed. Use only in situations where the drill leaves a distinct open drill slot allowing the slugs easy access to the germinating seeds in the furrow (if in doubt broadcast baits as above). Distribute through granule applicator hopper or mix thoroughly with the seed.

© SlugOut is a registered trademark of Nufarm Technologies USA Pty Ltd
 © Metarex Inov is a registered trademark of De Sangosse
 © Axcela is a registered trademark of Lonza AG (Lonza Ltd.)
 © Endure is a registered trademark of Ravensdown Limited



Knockout slugs and snails

Protection from seed to sale

The complete Tech-guide



Grow a better tomorrow

Slug 'em without shelling out. The effective and efficient choice.

SlugOut® all weather slug and snail bait with unique Corbie Technology for superior spreadability and more effective control.



Stop 'em in their tracks with SlugOut

With Corbie Technology, and better coverage than competitors, it's little surprise SlugOut is feared by pesky slugs and snails. Proudly developed and trialled in New Zealand, SlugOut offers excellent weatherability and optimal bait points per m² making it an effective and economical choice.

Unique Corbie granule formulation

SlugOut contains 18g/kg [1.8%] of the active ingredient metaldehyde but all the metaldehyde is in the edible outer coating giving an effective concentration of 90g/kg [9%].

Effective consumable concentration of metaldehyde

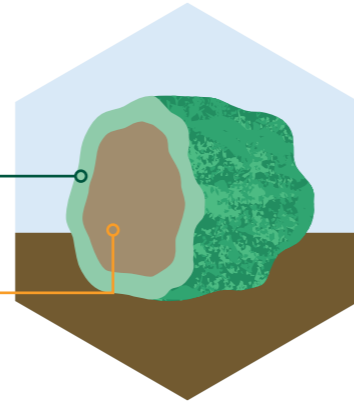
Product	Concentration (g/kg)	Percentage (%)
SlugOut	90g/kg	9%
Axcela®	30g/kg	3%
Metarex Inov®	40g/kg	4%
Endure®	50g/kg	5%

Edible outer coating (20%)

- Metaldehyde (9%)
- Cereal based
- Weather resistant

Inert inner core (80%)

- Biodegradable



Product features

Unique Corbie Technology

- Maximises bait effectiveness

Highly palatable

- Cereal coating and metaldehyde both lure slugs/snails

Excellent weatherability

- Rain and mould resistant

High number of bait points/m²

- Higher chance of pest feeding on the bait

Developed and trialled in New Zealand

- Joint development by Nufarm and Agresearch

IPM friendly

- Not toxic to earthworms or predatory beetles

Snapshot

Spreadability:
Excellent

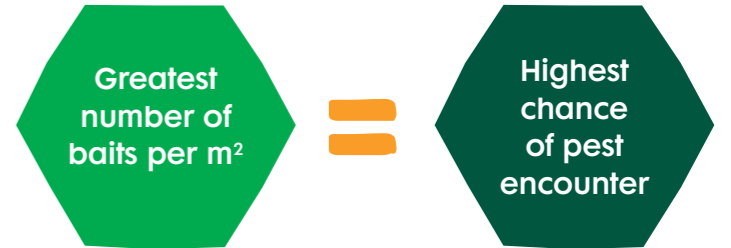
Efficacy:
Excellent

Weatherability:
Excellent

Ideal bait points per m²

Don't underestimate how important baits per m² are to ensure the effective control of slugs and snails. Thankfully, you can rely on SlugOut for the highest chance of slug and snail bait encounters.

Product	Bait points per m ²	
	Lowest Rate	Highest Rate
SlugOut	112	168
Metarex Inov®	18	30
Axcela®	43	60
Endure®	24	48



SlugOut

112 baits per m²

18 baits per m²

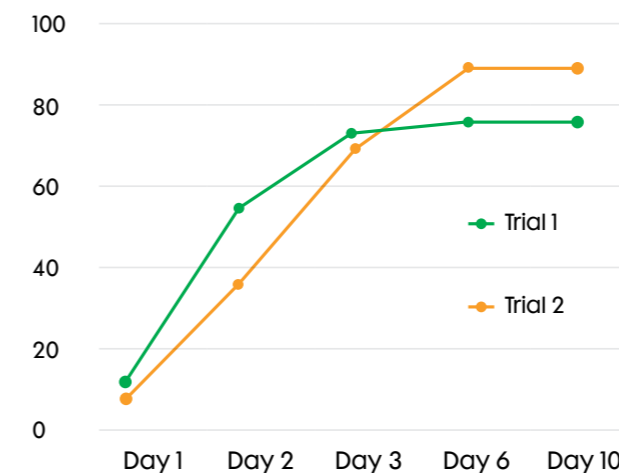
24 baits per m²

43 baits per m²



SlugOut gives reliable control

% slug control with SlugOut – Nufarm trials (2009)



% control of grey field slugs – Trial NUNZ1870 (2018)

