



Trilogy 631

TECHNICAL INFORMATION

OUR NEW 3 IN 1 DRUM

Trilogy 631 is a unique blend of three refined natural soil & plant beneficial compounds. Seasol (Kelp), PowerFish (Fish extract) and Organic Humate. Trilogy 631 enhances plant and root growth, supplying the soil carbon and nitrogen cycle, supplying plants with amino acids, leaves the soil with Soil Organic Matter, and converting more sunlight.



Seasol Liquid Seaweed extract



PowerFish Liquid Fish extract



Liquid Humate extract

Each of the extracts have ingredients for specific roles:

- **Seasol Liquid Seaweed** extract for plant productivity and stress tolerance - providing an organically diverse and plant active composition.
- **PowerFish Liquid Fish** extract for available organic nitrogen - providing free amino acids.
- **Liquid Humate** extract for available carbon - providing Humic acids and Fulvic acids.

In combination with growing plants, Seasol Trilogy 631 supplements the soil ecosystem processes needed for plant productivity and enhanced soil fertility by:

- **Enhancing plant and root growth** - plants then pump additional root exudates (photosynthate carbon) into the soil and feed soil microbiology at the rhizosphere.
- **Supplying the soil carbon and nitrogen cycle** - with available organic nitrogen and accessible carbon.
- **Supplying plants with amino acids** - and peptides for enhanced plant growth.
- **Leave the soil with Soil Organic Matter** - from increased plant and microbe organic matter.
- **Converting more sunlight** - due to increased plant growth, plants produce more photosynthate, pump relatively more exudates into the soil and enhance the functioning of the overall soil ecosystem.

Productive soils rely on soil ecosystem processes and the nitrogen and carbon cycles being synchronised. However, in depleted soils that are farmed intensely with limited crop diversity, the natural ecosystem processes become disconnected. Similarly, a dependency upon inorganic fertiliser eventually results in fragmented biological, plant, soil and microbe ecosystems.



Seasol Trilogy 631 is a product to boost, connect and regenerate the soil processes for better agricultural productivity and longer-term soil fertility (*Figure 1*).

Seasol Trilogy 631 - For priming the photosynthesis carbon pathway

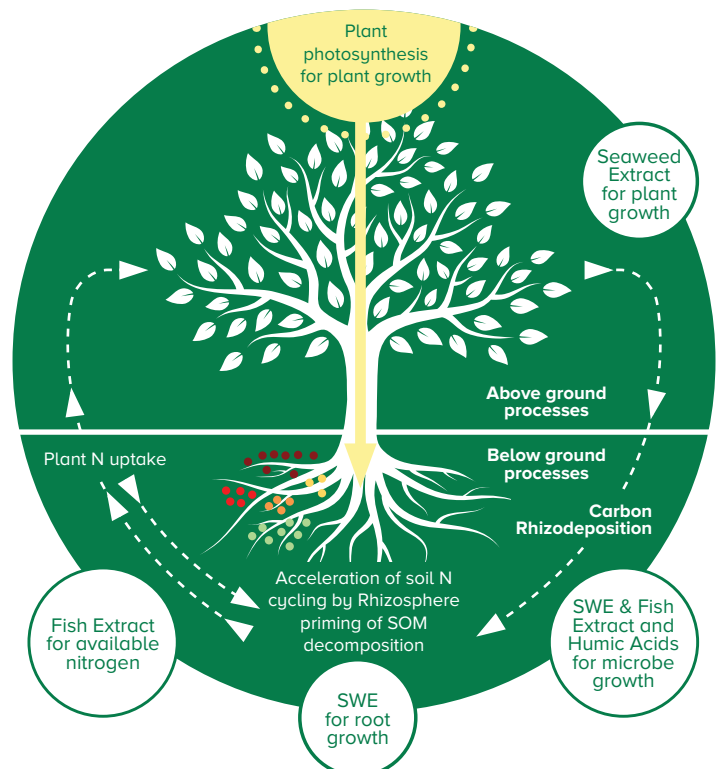


Figure 1 - Depiction of Seasol Trilogy 631 boosting, connecting and regenerating the soil ecosystem processes for better agricultural productivity and longer-term soil fertility.



Trilogy 631

A UNIQUE BLEND OF THREE REFINED NATURAL SOIL & PLANT BENEFICIAL COMPOUNDS



INSTRUCTIONS FOR USE

1. **Trilogy 631** must be diluted in water. Use sufficient water to achieve adequate coverage when applying as a foliar spray. 2. Shake or agitate before use. Maintain agitation during dilution & application if possible. 3. Climatic stress - use 8.5/17L / ha 3-7 days prior to and after extreme stress events (e.g. heatwave and frost) to mitigate crop damage and assist recovery.

APPLICATION GUIDELINES

Category	Crops	Rate	Application / Critical Comments
Nut Trees	Almonds, Hazelnuts, Macadamias, Pecans	8.5-17L/ha or 1.7ml per sq mtr of plant area	Planting - drench or water in with 1:250 dilution. Apply from green tip/first growth flush. Recommend 5 applications at critical growth stages inc post harvest. Use higher rate for larger trees
Deciduous Fruit Trees	Pome Fruits, Stone Fruits other deciduous species	8.5-17L/ha or 1.7ml per sq mtr of plant area	Planting - drench or water in with 1:250 dilution. Apply at each growth flush or 5 applications at critical growth stages and post harvest. Higher rates for larger trees
Evergreen Tree Crops	Avocados, Bananas, Citrus, Olives	8.5-17L/ha or 1.7ml per sq mtr of plant area	Planting - drench or water in with 1:250 dilution. Apply from Bud initiation and at each growth flush. 17 L/ha/month on mature trees, fertigated in every month that you irrigate
Fruiting Annuals	Capsicums, Cucurbits, Strawberries, Tomatoes, Pumpkins	8.5L/ha	Apply at seedling and transplanting and from 15cm growth. Every 10-14 days or 4 applications as required
Leafy Vegetables	Asparagus, Brassicas, Celery, Herbs, Lettuces	8.5L/ha	Planting out - 1:250 dilution (4ml/L or 4.0L/1,000L water), for watering in of seedlings in a water wheel planter or similar device. Apply at seedling and transplanting and from 3-4 leaf. Every 10-14 days or 4 applications as required
Root Vegetables	Carrots, Onions, Potatoes, Sweet Potatoes	17L/ha	Apply from in furrow. 4-5 applications at critical growth stages
Vine & Berry Crops	Blueberries, Raspberries, Wine & Table Grapes	8.5-17L/ha or 1.7ml per sq mtr of plant area	Apply regularly during the growing season. As a minimum, use the product at times of plant stress or recovery such as Pre-Flowering, Fruit Filling & Post Harvest. Higher rates for larger canopies. Do not apply directly over flowers where flowers are essential to crop productivity where bloom is a feature of fruit (e.g. blueberries & table grapes) do not apply as a foliar spray once the bloom develops to avoid any damage
Broadacre	Canola, Cotton, Pasture Crops / (inc Lucerne) Sugar Cane, Turf	8.5-17L/ha or 1.7ml per sq mtr of plant area	Apply at the start of the growing season and after each cut or grazing event in a rotational or strip grazing situation. Apply post emergence, 4-5 applications at critical growth stages. Seed coating (Cereals) Up to 8.5-17L/tonne of seed. Do not exceed a total of 17L of total liquid per tonne. Sugar Cane - 8.5L/ha in furrow or billet dip, 2nd app 17L/ha at tillering. Ratoon crops 17L/ha at tillering. Do not graze pasture with ruminant animals for 3 weeks after application

GENERAL INSTRUCTIONS

Foliar Spraying: Apply the product as soon as possible after mixing in the spray tank. Maintain agitation in spray tank if possible. **Trilogy 631** can be used as a foliar application or applied directly to the soil and can be applied with boom sprays, air blast sprays, drip systems, travelling irrigators, centre pivots and by aerial application.

Fertigation: Agitate the product regularly in the fertigation tank. For best results use the product on its own. **Trilogy 631** can be mixed with a number of agricultural chemicals, DO NOT COMBINE WITH CALCIUM NITRATE See tank mix compatibility information at www.seasol.com.au

STORAGE AND HANDLING Not to be kept for prolonged periods in hot conditions (>30°C) or in direct sunlight. Always use safe work practices for lifting and handling drums. Once diluted, the product should be applied within 24 hours. Agitate the product prior to using and re-agitate if the product is left standing for an extended period of time.

SAFETY DIRECTIONS Not to be taken. Keep out of reach from children. May irritate the skin and eyes. Avoid inhalation. Use in a well-ventilated space. Wash hands after use. Wash all edible plants before eating. If splashed, wash off with water. If swallowed or irritation persists, seek prompt medical advice. Additional information is listed in the Safety Data Sheet.

CONDITIONS OF SALE This product must be used strictly in accordance to the directions. The efficacy of the product may be influenced by environmental conditions and application procedures and no warranty, express or implied is offered.

