



# Van Vliet horti

Logistics & Load Carrier Solutions

## Total service package in logistics and load carriers for horticulture

More efficiency. More insight.  
More innovation. So every link  
in your supply chain is right.





# Van Vliet goes down a new path

Since early 2018, Van Vliet is part of Scheybeek and a new management team is at the helm. We have gone down a new path. What we bring to the table: 20 years of expertise in the field of load carriers and logistics issues. What we add: knowledge of and insight into supply chain management, innovation, transparent services and a complete package services in logistics and load carriers for horticulture and retail.

- Total service package in logistics and load carriers for horticulture and retail
- Market leadership; 20 years of expertise in load carriers and logistics
- Knowledge of and insight into supply chain management and innovation
- Own transport, 24.000 m<sup>2</sup> warehouse and repair shop
- Large stock of equipment and skilled professionals

Visit our website: [www.vanvlietcontainers.nl](http://www.vanvlietcontainers.nl)

# Load carriers and accessories

With Van Vliet you are always ready for new orders.  
Call us for pool management, handling services,  
trolley transport and repairs.



## DC CONTAINER



### » RETAIL QUALITY

Art. 10.1004

#### DIMENSIONS

1350 mm (l) x 565 mm (w) x 1900 mm (h)

#### WEIGHT

12,7 - 13 kg

#### DESCRIPTION

- Cold zinc
- Poplar plywood coated 6 mm
- Nylon wheels
- 1800 mm posts / 30 holes / 1,8 mm steel
- Holland production
- 375 kg max

### » MEDIUM QUALITY

Art. 10.1005

#### DIMENSIONS

1350 mm (l) x 565 mm (w) x 1900 mm (h)

#### WEIGHT

13,7 - 14 kg

#### DESCRIPTION

- Hot zinc
- Poplar plywood coated 6 mm
- Nylon wheels
- 1800 mm posts / 30 holes / 1,8 mm steel
- Holland production
- 375 kg max

### » BEST QUALITY

Art. 10.1003

#### DIMENSIONS

1350 mm (l) x 565 mm (w) x 1900 mm (h)

#### WEIGHT

18 - 19 kg (Heavy CC quality)

#### DESCRIPTION

- 2 mm steel
- High quality wood
- Widely used for internal processes
- Hot zinc
- Birch plywood coated 6,5 mm
- Nylon PA wheels
- 1800 mm posts / 30 holes / 2,5 mm steel
- Holland production
- 450 kg max

## DC SHELF



### » MEDIUM QUALITY

Art. 20.2002

#### DIMENSIONS

1275 mm (l) x 545 mm (w)

#### WEIGHT

4,1 kg

#### DESCRIPTION

- 5 layer coated Poplar plywood 6 mm
- Long steel 1,8 mm cold zinc
- 5 mm hook cold zinc
- 60 kg max

### » BEST QUALITY

Art. 20.2001

#### DIMENSIONS

1275 mm (l) x 545 mm (w)

#### WEIGHT

5,75 kg

#### DESCRIPTION

- 5 layer coated Birch plywood 6,5 mm
- Long steel 3 mm hot zinc
- 6 mm hook hot zinc
- 80 kg max



### » 1/2 DC CONTAINER (675)

Art. 10.1007

#### DIMENSIONS

675 mm (l) x 565 mm (w) x 1900 mm (h)

#### WEIGHT

10 - 11 kg

#### DESCRIPTION

- Cold or hot-dip galvanised or sprayed in color
- PP wheels
- 1800 mm posts / 30 holes / 1,8 mm steel
- 375 kg max



### » 1/2 DC SHELF (675)

Art. 20.2004

#### DIMENSIONS

600 mm (l) x 545 mm (w)

#### WEIGHT

2,15 kg

#### DESCRIPTION

- 5 layer coated Poplar plywood 6 mm
- Long steel 1,8 mm cold zinc
- 6 mm hook cold zinc
- 50 kg max



### » 1/2 DC CONTAINER (715)

Art. 10.1008

#### DIMENSIONS

715 mm (l) x 565 mm (w) x 1900 mm (h)

#### WEIGHT

10,5 - 11,5 kg

#### DESCRIPTION

- Cold zinc or hot zinc or color painted (steel/wood)
- PP wheels
- 1800 mm posts / 30 holes / 1,8 mm steel
- 375 kg max



### » 1/2 DC SHELF (715)

Art. 20.2005

#### DIMENSIONS

640 mm (l) x 545 mm (w)

#### WEIGHT

2,3 kg

#### DESCRIPTION

- 5 layer coated plywood 6 mm
- Long steel 1,8 mm cold zinc
- 6 mm hook cold zinc
- 50 kg max

**ONLY RENTAL**



**CC CONTAINER**

Art. 10.1001

**DIMENSIONS**

1350 mm (l) x 565 mm (w) x 1900 mm (h)

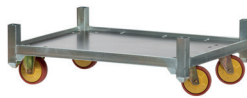
**WEIGHT**

18 - 19 kg



**DESCRIPTION**

- Hot-dip galvanised and coated birch plywood 6,5 mm
- PA wheels
- 1800 mm posts / 30 holes / 2,0 mm steel
- 450 kg max
- With RFID padlock and CC (RM)
- Excluding CC shelves



**MICRO CONTAINER**

Art. 10.1009

**DIMENSIONS**

810 mm (l) x 610 mm (w) x 1900 mm (h)

**WEIGHT**

11 - 12 kg

**DESCRIPTION**

- Cold zinc or hot zinc or color painted (steel/wood)
- Nylon wheels
- 1800 mm Posts / 30 holes / 1,8 mm steel
- 1150 mm / 18 holes / 1,8 mm steel
- 770 mm / 10 holes / 1,8 mm steel
- 375 kg max



**MICRO SHELF**

Art. 20.2006

**DIMENSIONS**

800 mm (l) x 590 mm (w)

**WEIGHT**

3,4 kg

**DESCRIPTION**

- 5 layer coated Poplar plywood 6 mm
- Long steel 1,8 mm cold zinc
- 6 mm hook cold zinc
- 60 kg max



» **PLASTIC HD MIRCO SHELF**

Art. 20.2017 (PP) Black

**DIMENSIONS**

805 mm (l) x 600 mm (w)

**WEIGHT**

4,2 kg

**DESCRIPTION**

- Reinforced (4 ribs)
- Easy to clean
- High quality + long lifespan
- 5 mm galvanised hooks
- Available in various colours, optional logo and ext. Only for large orders.
- 140 kg max



» **PLASTIC HD MIRCO SHELF**

Art. 20.2018 (PE) Green

**DIMENSIONS**

805 mm (l) x 600 mm (w)

**WEIGHT**

4,75 kg



### » MAESTRO CONTAINER

Art. 10.1011

#### DIMENSIONS

1310 mm (l) x 1020 mm (w) x 1900 mm (h)

#### WEIGHT

36,6 kg

#### DESCRIPTION

- Hot - dip galvanised (steel/aluminum)
- HD Rubber wheels & Pulling kit & barcode attachment mounting
- 1800 mm Posts / 30 holes (High heavy quality hot zinc) 2,5 mm
- 600 kg max



### » MAESTRO SHELF

Art. 20.2007

#### DIMENSIONS

1205 mm (l) x 1010 mm (w)

#### WEIGHT

7,3 kg

#### DESCRIPTION

- Full aluminum
- 6 mm hook
- 200 kg max
- Fits also on the Holland container



### » HOLLAND CONTAINER

Art. 10.1701

#### DIMENSIONS

1320 (l) mm x 1020 (w) mm x 2100 mm (h)

#### WEIGHT

55 kg

#### DESCRIPTION

- Hot dipped steel base, steel punched sheet
- Heavy Duty TPR 125 mm (2 x swivel & 2 x fixed)
- Hot dipped /1990 mm / 2 mm cold zinc / 33 holes
- Racking, powder coating in any RAL color, barcode tags, company name added, other wheel types



### » HOLLAND SHELF

Art. 20.2012

#### DIMENSIONS

1205 mm (l) x 1010 mm (w)

#### WEIGHT

7,3 kg

#### DESCRIPTION

- Company name engraved in the sheet
- Full aluminum
- 6mm hook
- Fits also on maestro container

PATENT PENDING



### MAXI CONTAINER

Art. 10.1019 (CONTAINER)

Art. 20.2019 (SHELF)

#### DIMENSIONS

1240 mm (l) x 1020 mm (w) x 2350 mm (h)

#### WEIGHT

63,5 kg

#### DESCRIPTION

- Full hot zinc (steel/wood)
- Nylon (PA) castors (250 kg per wheel capacity)
- 1 base / 2 shelves / 4 posts HZ / 4 posts RAL
- Up to 18% transport efficiency (26 per FTL)
- Shelf 200 kg max







### CC EURO CONTAINER

Art. 10.1012

#### DIMENSIONS

810 mm (l) x 608 mm (w) x 1850 mm (h)

#### WEIGHT

22,6 kg (incl. 4 posts)



#### DESCRIPTION

- Hot zinc (steel)
- Temp resistant -25°C - + 80°C
- 1100 mm posts / 21 holes (High quality hot zinc)
- 450 kg max



### CC EURO SHELF

Art. 20.2008

#### DIMENSIONS

804 mm (l) x 602 mm (w)

#### WEIGHT

3,4 kg

#### DESCRIPTION

- Hot zinc (steel)
- Mesh wire
- 125 kg max



### » DC CONTAINER ONE WAY

Art. 10.1004DISP

#### DIMENSIONS

1350 mm (l) x 565 mm (w) x 1900 mm (h)

#### WEIGHT

36,5 kg (incl. 4 posts)

#### DESCRIPTION

- Disposable, perfect for one way distribution on. Adjustable in height, lightweight.
- Powder coated steel base, 4 mm compressed wood
- Only sales
- 80-100-125 mm PP (Polypropylene), 2 x swivel & 2 x fixed
- Powder coated / 1800 mm / 0,8 mm steel
- Other post sizes, other wheel types available
- Any RAL color
- Also available in europallet size and retail size (800 x 600)

### » DC ONE WAY SHELF

Art. 20.2003DISP

#### DIMENSIONS

1350 mm (l) x 565 mm (w)

#### DESCRIPTION

- Powder coated folded sheet, 4 mm, compressed wood
- Any RAL color



### » MICRO CONTAINER ONE WAY

Art. 10.1009DISP

#### DIMENSIONS

805 mm (l) x 605 mm (w) x 1900 mm (h)

#### WEIGHT

25,5 kg (incl. 4 posts)

#### DESCRIPTION

- Disposable, perfect for one way distribution. Adjustable in height, lightweight.
- Powder coated steel base, 4 mm compressed wood
- Only sales
- 80-100-125 mm PP (Polypropylene) 2 x swivel & 2 x fixed
- Powder coated / 1800 mm / 0,8 mm steel
- Other post sizes, other wheel types available, any RAL color

### » MICRO SHELF ONE WAY

Art. 20.2006DISP

#### DIMENSIONS

800 mm (l) x 600 mm (w)

#### DESCRIPTION

- Powder coated folded sheet, 4 mm compressed wood
- Any RAL color

## USED



### » CAGE CONTAINER (2100)

Art. 10.1017

#### DIMENSIONS

1330 mm (l) x 1030 mm (w) x 2100 mm (h)  
3 sides closed by racks

#### DESCRIPTION

- Hot zinc (steel/mesh wire/wood)
- Heavy duty castors
- 2 shelves included
- Used mostly on stock, new only on request

### » CAGE CONTAINER (2400)

Art. 10.1018

#### DIMENSIONS

1330 mm (l) x 1030 mm (w) x 2400 mm (h)  
3 sides closed by racks

#### DESCRIPTION

- Hot zinc (steel/mesh wire/wood)
- Heavy duty castors
- 2 shelves included
- Used mostly on stock, new only on request



### DISPLAY CONTAINER

Art. 50.4500

#### DIMENSIONS

1350 mm (l) x 565 mm (w) x 2280 mm (h)

#### WEIGHT

48 kg/box

#### DESCRIPTION

- The ideal solution for presenting your goods. Foldable and packed in a cardboard box.
- Complete set with DC base, posts, construction and tarp.
- Excluding shelves.



### MESH WIRE CONTAINER

Art. 10.1020

#### DIMENSIONS

1350 mm (l) x 565 mm (w) x 1900 mm (h)

#### WEIGHT

17 kg



### DESCRIPTION

- Full hot zinc base (3,5 mm steel wire)
- Nylon (PA) castors
- 4 posts 1800 mm included
- 450 kg max



### MESH WIRE SHELF

Art. 20.2020

#### DIMENSIONS

1275 mm (l) x 545 mm (w)

#### WEIGHT

7,5 kg

### DESCRIPTION

- Full hot zinc (3,5 mm steel frame / 3,0 mm strips / 6 mm hooks)
- Fits in Mesh wire container, DC Container and CC Container
- 150 kg max



### HEAVY DUTY SHELF

Art. 20.2011

#### DIMENSIONS

1275 mm (l) x 545 mm (w)

#### WEIGHT

8,75 kg

### DESCRIPTION

- Full hot zinc (3,0 mm steel frame / 6 mm hooks)
- 6,5 mm 5 layer plywood with protective film coating
- Fits in Mesh wire container, DC Container and CC Container
- Often used for heavy loads
- 200 kg max



### PLASTIC HD SHELF

Art. 20.2013 (PE) 6,5 kg / Green  
Art. 20.2010 (PP) 5,65 kg / Black

#### DIMENSIONS

1275 mm (l) x 545 mm (w)



### DESCRIPTION

- PE Shelf is reinforced 5 ribs / holds 175 kg
- PP Shelf reinforced 2 ribs / holds 80 kg
- Easy to clean
- High quality + long lifespan
- 5 mm galvanised hooks
- Available in various colours, optional logo and text. Only for large orders.



### BUCKET SHELF

Art. 20.2038

#### DIMENSIONS

1275 mm (l) x 545 mm (w)

#### WEIGHT

7,76 kg

### DESCRIPTION

- The strong bucket holder for your CC's and DC's. Made of solid steel and hot-dip galvanized.



» **FLEX SHELF ½**  
Art. 20.2015

**DIMENSIONS**  
630 mm (l) x 545 mm (w)

**WEIGHT**  
3,05 kg



**DESCRIPTION**

- 5 layer coated Poplar plywood 6 mm
- Long steel 1,8 mm cold zinc
- 6 mm hook cold zinc
- 45 kg max



» **FLEX SHELF ¾**  
Art. 20.2016

**DIMENSIONS**  
890 mm (l) x 545 mm (w)

**WEIGHT**  
3,55 kg



**DESCRIPTION**

- 5 layer coated Poplar plywood 6 mm
- Long steel 1,8 mm cold zinc
- 6 mm hook cold zinc
- 45 kg max



**VERTICAL SHELF**  
Art. 20.2031 - long  
Art. 20.2032 - short

**DIMENSIONS**  
1195 mm (l) x 455 mm (w) - long  
440 mm (l) x 455 mm (w) - short

**WEIGHT**  
2,1 kg - long  
1,2 kg - short

**DESCRIPTION**

- Steel hooks 4 mm > 6 mm
- 6 mm plywood with protective film coating
- Often used to prevent transport damage for vegetable plants

**EXTENSION**

Art. 30.3001

**DESCRIPTION**

- 390 mm (length)
- Galvanized steel
- 200 grams
- 50 pieces per bundle
- 7 holes



Art. 30.3002

**DESCRIPTION**

- 660 mm (length)
- Galvanized steel
- 240 grams
- 50 per pieces bundle
- 13 holes



Art. 30.3005

**DESCRIPTION**

- 460 mm (length)
- Plastic (black)
- 100 grams / 75 pieces per box
- 9 holes



Art. 30.3006

**DESCRIPTION WRAPSTICK**

- 450 mm (length)
- Plastic (black)
- 80 grams / 150 pieces per box
- Only for packaging purposes



Art. 30.3007

**DESCRIPTION WRAPSTICK**

- 715 mm (length)
- Plastic (black)
- 140 grams / 170 pieces per box
- Only for packaging purposes





### PLASTIC STACKING BLOCK

Art. 30.3104

- 90 / BOX

When stacking up DC/CC containers, safety is very important. To prevent incidents and accidents Van Vliet introduced this innovation. The plastic stacking block ensures that the pyramid is locked on four sides when the container is stacked on the rods.



### PLASTIC SAFETY CAPS

Art. 30.3103

- 650 / BOX

The posts used for the containers can have sharp edges at the ends. To protect customers in stores against this, you can place this plastic safety cap on the posts.



### WATERPLATE

Art. 20.2080

The water plate can be placed on any type of Danish plate. The dish is of solid heavy quality and guarantees years of ease of use.

### WEIGHT

2,12 kg

## POSTS



**1,80M**



**1,80M**



**1,15M**



**0,77M**

Surface	Hot zinc	Cold zinc	Cold zinc	Cold zinc
Length	1800 mm	1800 mm	1150 mm	770 mm
Thickness	2,5 mm	1,8 mm	1,8 mm	1,8 mm
# holes	30 holes	30 holes	18 holes	10 holes
Weight	3,4 kg	2,3 kg	1,5 kg	1 kg
Packed	200 pieces	200 pieces	200 pieces	200 pieces
Art.	40.3024	40.3021	40.3022	40.3023

# ACCESSORIES

## WHEELS

### FIXED WHEEL NYLON

Art. 60.3021

#### DESCRIPTION

- Medium duty (PA) Nylon fixed wheel
- Ø 125 mm / H = 155 mm / hole distance 60 mm x 80 mm
- Wheel width = 38 mm
- 150 kg per wheel (450 kg per trolley max)



### SWIVEL WHEEL NYLON

Art. 60.3020

#### DESCRIPTION

- Medium duty (PA) Nylon swivel wheel
- Ø 125 mm / H = 155 mm / hole distance 60 mm x 80 mm
- Wheel width = 38 mm
- 150 kg per wheel (450 kg per trolley max)

### FIXED WHEEL GUMMY

Art. 60.3010

#### DESCRIPTION

- Medium duty blue gummy fixed wheel
- Ø 125 mm / H = 155 mm / hole distance 60 mm x 80 mm
- Wheel width = 38 mm
- 150 kg per wheel



### SWIVEL WHEEL GUMMY

Art. 60.3011

#### DESCRIPTION

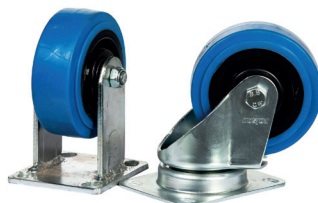
- Medium duty blue gummy swivel wheel
- Ø 125 mm / H = 155 mm / hole distance 60 mm x 80 mm
- Wheel width = 38 mm
- 150 kg per wheel

### HEAVY DUTY TPR FIXED WHEEL

Art. 60.3019

#### DESCRIPTION

- Ø 125 mm wheel - 42 mm wide
- Plate mount 85 x 70 mm
- 1860 gram
- 375 kg per wheel



### HEAVY DUTY TPR SWIVEL WHEEL

Art. 60.3018

#### DESCRIPTION

- Ø 125 mm wheel - 42 mm wide
- Plate mount 85 x 70 mm
- 1860 gram
- 375 kg per wheel

### FIXED WHEEL PP 125

Art. 60.3008

#### DESCRIPTION

- Standard duty PP wheel
- Ø 125 mm
- 125 kg per wheel



### SWIVEL WHEEL PP 125

Art. 60.3009

#### DESCRIPTION

- Standard duty PP wheel
- Ø 125 mm
- 125 kg per wheel

Other wheel types available, please contact us.



# Expertise and innovation in load carriers

Innovative concepts deserve equally innovative load carriers and logistic solutions. We contribute ideas, design, test and produce. Van Vliet offers 20 years of expertise in load carriers and logistics. Van Vliet stands for innovation, quality and transparency. With our total service package we deliver tailor-made solutions.

## Advantages of our service

- Quality: 20 years of expertise
- Innovation: own R&D department
- Transparency: always up-to-date insight into your transactions
- Total service package
- Customisation

## Contact details

Van Vliet Horti  
Rietwijkeroordweg 33  
1432 JG Aalsmeer  
Holland

T: +31 297 23 17 23

F: +31 297 32 11 30

[info@vanvlietcontainers.nl](mailto:info@vanvlietcontainers.nl)  
[www.vanvlietcontainers.nl](http://www.vanvlietcontainers.nl)

Een uitgave van Van Vliet Horti. Onder voorbehoud van fouten en wijzigingen. Juni 2019.  
A publication of Van Vliet Horti. Subject to errors and modifications. June 2019.  
Eine Publikation von Van Vliet Horti. Vorbehaltlich von Fehler und Änderungen. Juni 2019.  
Une publication de Van Vliet Horti. Sous réserve d'erreurs et modifications. Juin 2019.